

# GRE Text Completion and Sentence Equivalence Practice Questions: Test Prep Series

The Graduate Record Examinations (GRE) is a standardized test required for admission to many graduate schools in the United States. It assesses verbal reasoning, quantitative reasoning, and analytical writing skills. Text completion and sentence equivalence are two types of questions that commonly appear on the verbal reasoning section of the GRE.

Text completion questions test your ability to understand the context of a passage and fill in the blanks with the most appropriate words. Sentence equivalence questions present you with two sentences and ask you to identify words that can be used to make the sentences equivalent in meaning.



## GRE Text Completion and Sentence Equivalence Practice Questions (Test Prep Series) by Glen E. Clarke

★★★★☆ 4.4 out of 5

Language : English  
File size : 6024 KB  
Text-to-Speech : Enabled  
Screen Reader : Supported  
Enhanced typesetting : Enabled  
Print length : 170 pages  
Lending : Enabled



## Strategies for Text Completion Questions

- Read the passage carefully to understand the overall context.
- Identify the type of information that is missing from the blanks.
- Consider the word order and grammatical structure of the sentence.
- Eliminate answer choices that are grammatically incorrect or do not fit the context.
- Guess and check if necessary, but try to support your guess with evidence from the passage.

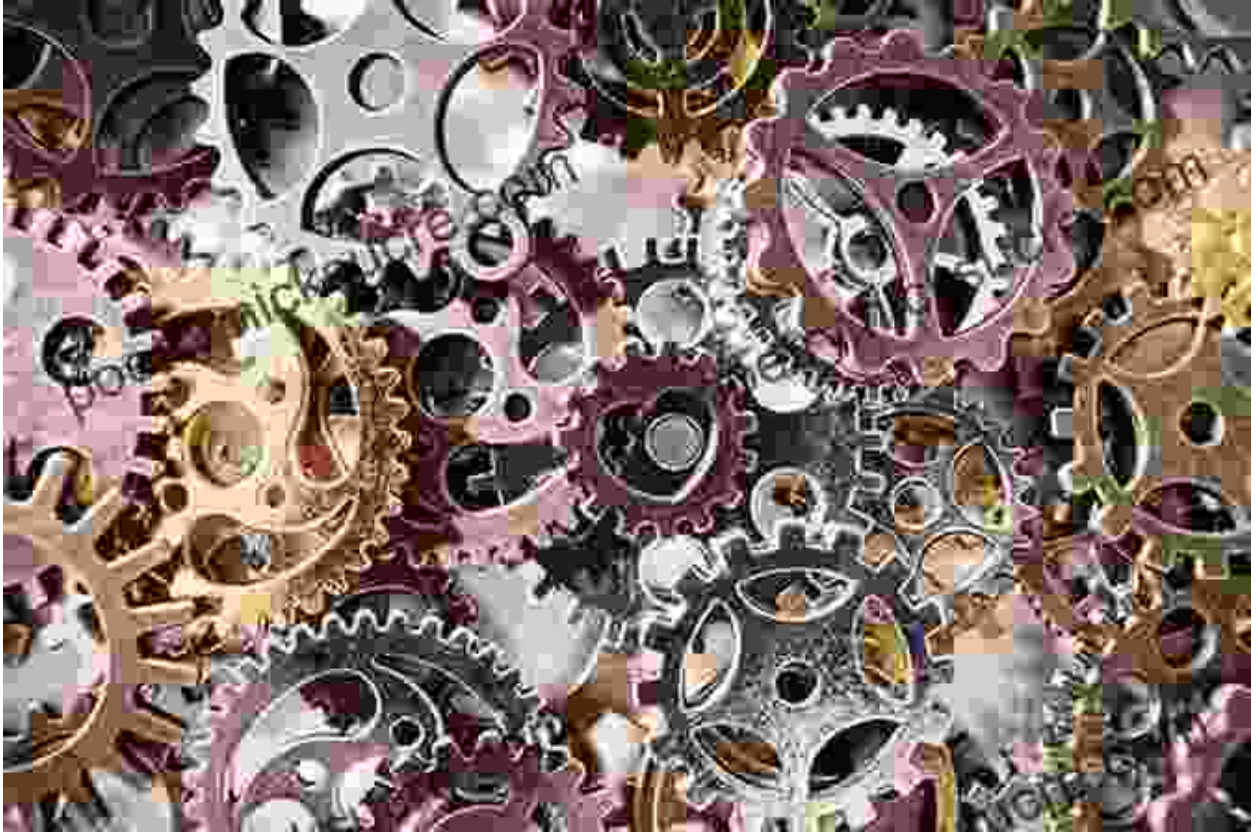
### **Strategies for Sentence Equivalence Questions**

- Read both sentences carefully to understand their meanings.
- Identify the key concepts and relationships between the sentences.
- Eliminate answer choices that do not make the sentences equivalent in meaning.
- Consider the context, grammar, and sentence structure when making your choice.
- Guess and check if necessary, but try to base your guess on a solid understanding of the sentences.

### **Sample Practice Questions**

#### **Text Completion**

The \_\_\_\_\_ of the machine was so loud that it made it difficult to concentrate.



1.



2.



3.



4.

### **Sentence Equivalence**

The professor's lecture was so \_\_\_\_\_ that the students fell asleep.

The professor's lecture was so \_\_\_\_\_ that the students nodded off.

1. A. boring / fascinating
2. B. dull / engaging

- 3. C. tedious / captivating
- 4. D. monotonous / stimulating

**Answer Key:**

**Text Completion: A**

**Sentence Equivalence: C**

By following these strategies and practicing with sample questions, you can improve your skills in text completion and sentence equivalence questions on the GRE. Remember to approach each question carefully, considering the context, grammar, and sentence structure. With consistent practice, you can increase your confidence and improve your overall score on the GRE verbal reasoning section.



**GRE Text Completion and Sentence Equivalence Practice Questions (Test Prep Series)** by Glen E. Clarke

★★★★☆ 4.4 out of 5

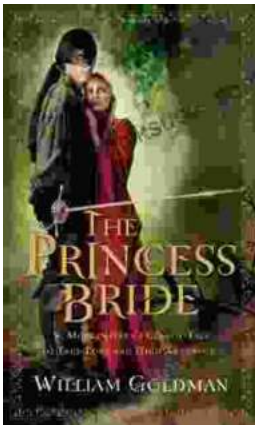
- Language : English
- File size : 6024 KB
- Text-to-Speech : Enabled
- Screen Reader : Supported
- Enhanced typesetting : Enabled
- Print length : 170 pages
- Lending : Enabled





## 79 ESL Activities, Games, and Teaching Tips for Big Classes (20+ Students)

Teaching large ESL classes can be a challenge, but it's definitely possible with the right strategies. Here are 79 ESL activities, games, and...



## Morgenstern: A Classic Tale of True Love and High Adventure

Morgenstern is a classic tale of true love and high adventure. Set in a medieval world, the story follows the journey of Morgenstern, a young...